

# LEGEND DISTRIBUTION



Legend Distribution

BANQUET/CONFERENCE

CHAIRS

## CONTENTS

- 1-57 Banquet/Conference Chairs
- 58 Chair Dolly Selection
- 59-60 Ballroom Chair
- 61-62 Chair Cover Options
- 63-72 Folding Table
- 73 Table Dolly
- 74 Table Caddies
- 75-80 Fabric Options



*The best seat design*



*The best Action back design*



*The best glides design*

DG-60490  
Size:W435\*D590\*H945/SH475mm





03



DG-60488  
Size:W440\*D630\*H935/SH475mm



DG-60489  
Size:W420\*D615\*H955/SH475mm



DG-60487  
Size:W440\*D600\*H960/SH475mm

04



05



DG-60814-3  
Size:W470\*D548\*H920/SH480mm



DG-60814-2  
Size:W470\*D548\*H920/SH480mm



DG-60814-1  
Size:W470\*D548\*H920/SH480mm

06



DG-60861  
Size:W445\*D550\*H950/SH480mm



DG-60862  
Size:W455\*D555\*H935/SH480mm



DG-60863  
Size:W445\*D555\*H930/SH480mm



DG-60864  
Size:W460\*D535\*H890/SH480mm



DG-60865  
Size:W445\*D555\*H930/SH480mm



DG-60888  
Size:W470\*D552\*H895mm



DG-60889



DG-60866-2  
Size:W475\*D565\*H870/SH435mm



DG-60866-3  
Size:W475\*D565\*H870/SH435mm



DG-60867-3  
Size:W460\*D565\*H895/SH450mm



DG-60866-1  
Size:W475\*D565\*H870/SH435mm



DG-60867-2  
Size:W460\*D565\*H895/SH450mm



DG-60867-1  
Size:W460\*D565\*H895/SH450mm





DG-60556-1  
Size:W465\*D590\*H890/SH490mm



DG-60556-3  
Size:W465\*D590\*H890/SH490mm



DG-60556  
Size:W465\*D590\*H890/SH490mm





DG-60813-1  
Size:W465\*D590\*H890/SH490mm



DG-60868-1  
Size:W470\*D625\*H910/SH475mm



DG-60813-3  
Size:W465\*D590\*H890/SH490mm



DG-60813  
Size:W465\*D590\*H890/SH490mm



DG-60868-3  
Size:W470\*D625\*H910/SH475mm



DG-60868-2  
Size:W470\*D625\*H910/SH475mm



DG-60869  
Size:W460\*D585\*H880/SH480mm



DG-60482-半背  
Size:W460\*D585\*H880/SH480mm



DG-60482-扣手  
Size:W460\*D585\*H880/SH490mm



DG-60815  
Size:W470\*D640\*H925/SH490mm



DG-60485  
Size:W445\*D605\*H930/SH475mm



DG-60887  
Size:W450\*D520\*H920/SH460mm



DG-60485-3  
Size:W445\*D605\*H930/SH475mm



DG-60485-2  
Size:W445\*D605\*H930/SH475mm



DG-60891  
Size:W470\*D610\*H940/SH483mm



DG-60486  
Size:W445\*D605\*H930/SH475mm





DG-60870-1  
Size:W460\*D550\*H855/SH455mm



DG-60870-3  
Size:W460\*D550\*H855/SH455mm



DG-60473  
Size:W460\*D550\*H855/SH455mm



DG-60238  
Size:W490\*D570\*H928/SH475mm



DG-60237  
Size:W490\*D570\*H928/SH475mm



DG-60237-2  
Size:W490\*D570\*H928/SH475mm





DG-60549-ALS  
Size:W470\*D610\*H935/SH480mm



DG-6S9B-1  
Size:W462\*D605\*H920/SH465mm



DG-6G8B  
Size:W464\*D615\*H920/SH465mm



DG-60552  
Size:W460\*D480\*H940/SH490mm



DG-60892  
Size:W458\*D584\*H965/SH470mm



DG-60892-ARM  
Size:W635\*D635\*H940/SH470mm





DG-60550  
Size:W450\*D575\*H935/SH465mm



DG-60712  
Size:W475\*D545\*H935/SH455mm



DG-60712A-3  
Size:W550\*D550\*H935/SH455mm



DG-60496  
Size:W480\*D590\*H940/SH465mm



DG-60496  
Size:W480\*D590\*H940/SH465mm



DG-60496A  
Size:W540\*D590\*H940/SH465mm



DG-60890  
Size:W483\*D603\*H960/SH470mm



DG-60890-ARM  
Size:W632\*D508\*H965/SH483mm





DG-60566  
Size:W600\*D590\*H950/SH480mm



DG-60871  
Size:W550\*D615\*H945/SH490mm





DG-W0334  
Size:W460\*D625\*H1025/SH510mm



DG-W0265  
Size:W445\*D533\*H991/SH483mm



DG-W0391A  
Size:W570\*D545\*H925/SH465mm



DG-W0290  
Size:W\*D\*H/SHmm



DG-60480  
Size:W\*D\*H/SHmm





45



DG-60620-1-ARM  
Size:W660\*D615\*H910/SH490mm



DG-60520  
Size:W505\*D565\*H835/SH465mm



DG-60520-ARM  
Size:W610\*D565\*H835/SH465mm

46



DG-60214  
Size:W450\*D560\*H955/SH475mm



DG-60213  
Size:W455\*D570\*H940/SH475mm





DG-628B  
Size:W445\*D540\*H945/SH480mm



Ganging Bracket option



DG-628B-1  
Size:W445\*D540\*H945/SH480mm



DG-60416  
Size:W600\*D540\*H940/SH465mm



DG-60215  
Size:W450\*D525\*H940/SH475mm



DG-60215-ARM  
Size:W595\*D530\*H930/SH470mm



DG-60551  
Size:W450\*D525\*H940/SH475mm



DG-617A  
Size:W455\*D615\*H905/SH475mm

## CONSTRUCTION DETAILS



DG-610B-2  
Size: W450\*D535\*H900/SH475mm



DG-610B-1



DG-610B-3



**Leg Bumpers**  
Small but essential, leg bumpers on all four legs

**Fire Retardant Foam Padding**

**Floor Glides**  
Durable, non-marring standard glides or deluxe pivoting glides provide protection for hard surface and carpet floors



- Hand Hold**  
A convenient hand hold back makes stacking and moving easy.
- 2-Piece Hidden Tab Back**  
Our standard two-piece back provides a finished appearance while concealing hidden tab fasteners that provide maximum durability.
- Seat and Back**  
Seats and backs are constructed with wood composite or plywood seat and backboards, and screw fastened for added rigidity.
- Rear Bar**  
Standard rear bar provides additional lateral support and strength to prevent twisting and extend service life.
- Stack bars**  
Stack Bars ensure correct chair spacing when stacked to prevent frame distortion and provide greater stability.
- Steel Tube Frame**  
Rugged 18 gauge tubular steel frames ensure a long service life and accept a wide range of durable paint and plated finishes
- Welded Frame**  
All frames, stack bars and rear bars are fillet welded
- California TB133 Certified**



DG-610-S  
Size:W445\*D595\*H835/SH450mm



DG-610A3  
Size:W455\*D530\*H860/SH470mm



DG-610A  
Size:W445\*D535\*H855/SH475mm

## Ganging brackets Selection



GB4 closed position



GB4 open position



GB2



GB3



GB6



GB5 closed position



GB5 open position

Ganging brackets Selection



Leg Ganging



Glides



Plastic glide



Nickel Glides

Chair Dolly Selection



DG-30140



DG-30142



Ballroom Chair



DG-6M3B

Ballroom Chair



DG-W0127



DG-60219



DG-W0128



DG-60026



DG-60010



DG-60011





CHAIR COVER 1



CHAIR COVER 2



CHAIR COVER 3



CHAIR COVER 4

Folding Table

Folding Table



DG-10134



DG-10131








DG-10078



DG-10058



Table Style	Model No	Size(W×L×H)	Table Style	Model No	Size(W×L×H)	Table Style	Model No	Size(W×L×H)
Rectangle 	DG-10134	30" × 60" × 30" 30" × 72" × 30" 30" × 96" × 30" 36" × 72" × 30" 36" × 96" × 30"	1/2 Round 	DG-10132	1/2 of 30dia × 30" 1/2 of 48dia × 30" 1/2 of 60dia × 30" 1/2 of 72dia × 30" 1/2 of 96dia × 30"	1/4 Round 	DG-10060	1/4 of 48dia × 30" 1/4 of 60dia × 30" 1/4 of 72dia × 30" 1/4 of 96dia × 30"
Round 	DG-10078	30" dia × 30" 48" dia × 30" 60" dia × 30" 66" dia × 30" 72" dia × 30"				Square 	DG-10058	30" × 30" × 30" 36" × 36" × 30"

**SPECIFICATIONS**


- Folding table, 16 gauge square steel tube
- Plywood tops
- Available with standard PVC edge and aluminum edge
- Adjustable levelers allow adjustment on uneven floors
- Powder coat finish for the metal base
- Save space by folding



DG-10136

**SPECIFICATIONS**

- Folding table, 16 gauge steel tube
- Thickness for the tops available with 1" or 1 1/8" ;
- Tops available with HPL and Melamine, high-density particle board core , back is covered with a balance backer,
- Available with standard PVC edge, aluminum edge
- Adjustable levelers allow adjustment on uneven floors
- Powder coat finish for the metal base
- Save space by folding


Table Style	Model No	Size(WxL)
Rectangle 	DG-10136	24" x 48"
		24" x 60"
		24" x 72"
		30" x 48"
		30" x 60"
		30" x 72"



DG-10135

**SPECIFICATIONS**

- Folding table, 16 gauge steel tube
- Thickness for the tops available with 1" or 1 1/8" ;
- Tops available with HPL and Melamine, high-density particle board core , back is covered with a balance backer,
- Available with standard PVC edge, aluminum edge
- Adjustable levelers allow adjustment on uneven floors
- Powder coat finish for the metal base
- Save space by folding

Table Style	Model No	Size(WxL)
Rectangle 	DG-10135	24" x 48"
		24" x 60"
		24" x 72"
		30" x 48"
		30" x 60"
		30" x 72"



Folding Table

Folding Table



67



DG-10213  
Size:φ1800\*H750mm

68



DG-10211  
Size:W2600\*D1200\*H730mm



DG-10212  
Size:W1200\*D400\*H750mm



DG-10208



DG-10209



DG-10210

**SPECIFICATIONS**

- Flip table, 16 gauge steel tube
- Thickness for the tops available with 1" or 1 1/8" ;
- Tops available with HPL and Melamine; high-density particle board core , back is covered with a balance backer;
- Available with standard PVC edge, aluminum edge
- Adjustable levelers allow adjustment on uneven floors
- Powder coat finish for the metal base

Table Style	Model No	Size(W×L)
Rectangle	DG-10137	24" × 48"
		24" × 60"
		24" × 72"
		30" × 48"
		30" × 60"
		30" × 72"



DG-10137

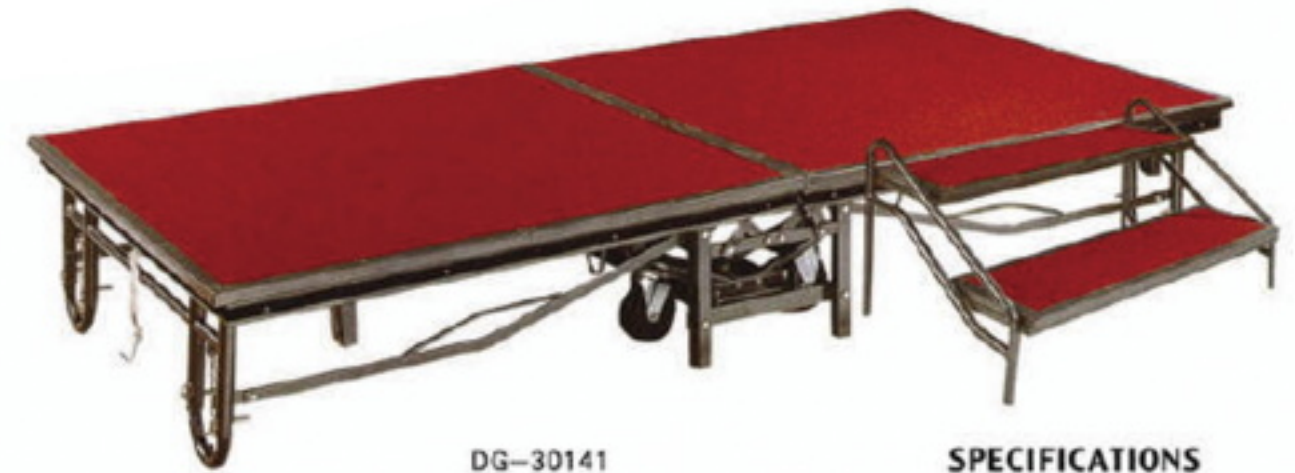


DG-30317

**Information:**

Professional Grade Table Caddies are designed to roll long distances on concrete, tile or carpeted floors. Caddies feature 6" diameter, 1 3/8" wide, polyurethane wheel, roller bearing axle, swivel plate casters mounted to a heavy gauge welded steel frame. Crossbeams are carpeted and side rails are covered with neoprene rubber to protect tables.

SIZE	CAPACITY	WT LBS
81"L x 31 1/4"W x 42 1/4"H	8 (48"-72" round tables)	81
81"L x 31 1/4"W x 34 1/4"H	8 (rectangular/serpentine tables)	75



DG-30141

**SPECIFICATIONS**

- Activity Stage, 14 gauge steel tube
- Powder coat finish for the metal base
- save space by folding

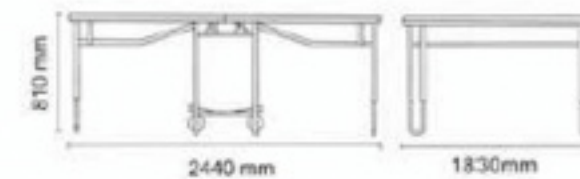
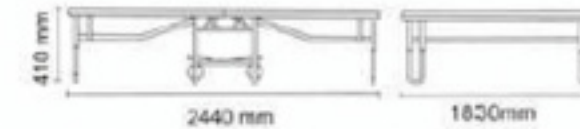
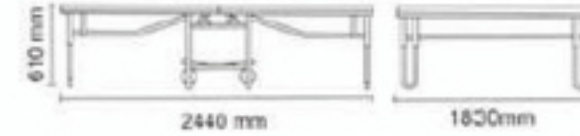
**Information:**

Professional Grade Table Caddies are designed to roll long distances on concrete, tile or carpeted floors. Caddies feature 6" diameter, 1-3/8" wide, polyurethane wheel, roller bearing axle, swivel plate casters mounted to a heavy gauge welded steel frame. Crossbeams are carpeted and side rails are covered with neoprene rubber to protect tables.

SIZE	CAPACITY	WT LBS
74"L x 31 1/4"W x 41 3/4"H	10-12(24"/30"/36"W x 60"/72"L tables) 20-24(18"W x 72"L tables)	82
87 1/2"L x 31 1/4"W x 41 3/4"H	10-12(24"/30"/36"W x 66"L tables) 20-24(18"W x 66"L tables)	80



DG-30318



← Wheel Caster with locking option

Standard Edge Styles



Top Options

- Tops available with HPL and Melamine; high-density particle board core, back is covered with a balance backer;
- Available with standard PVC edge, aluminum edge

High-density particle board core



Wood Grain for metal



Natural

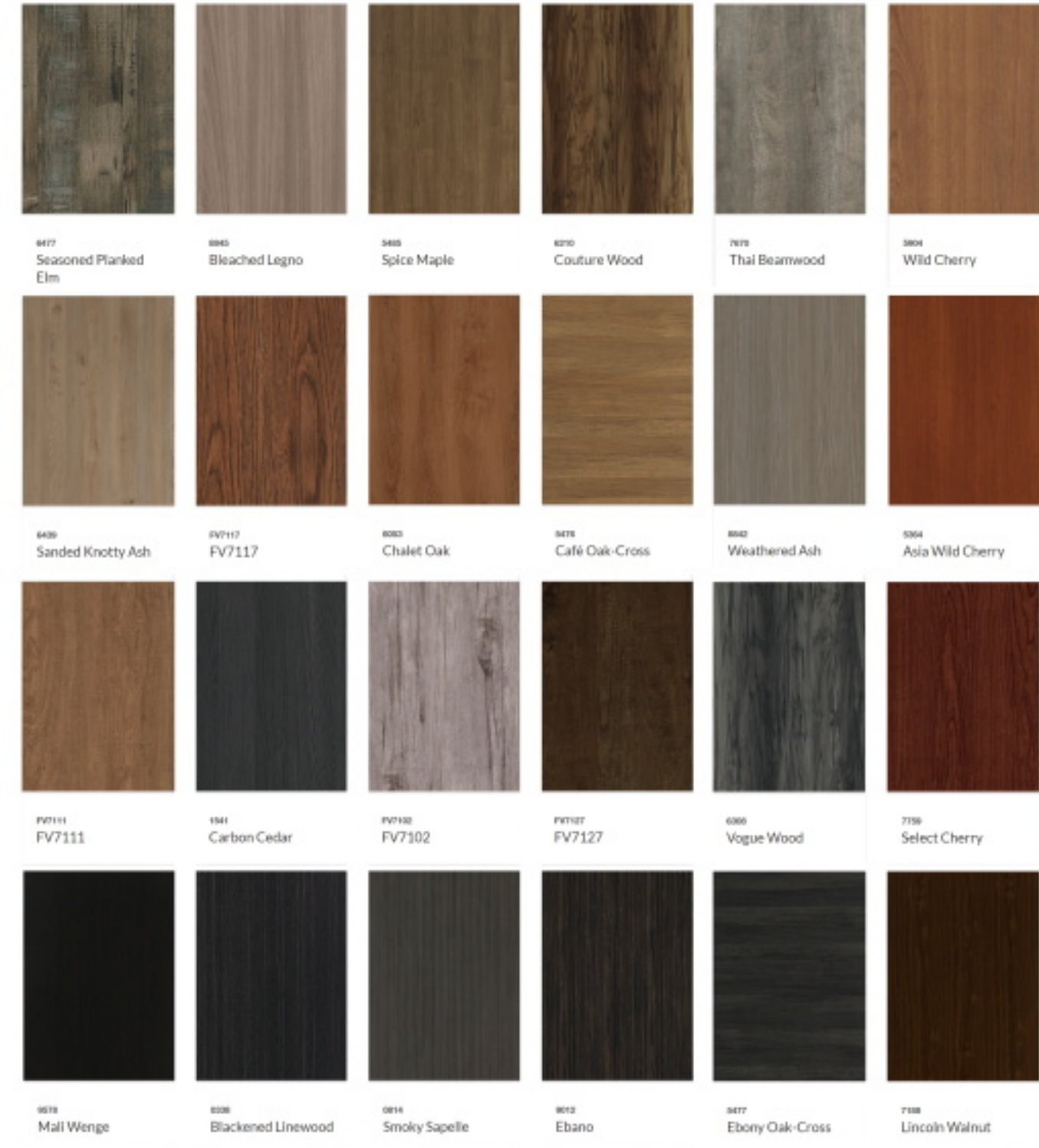
Mahogany

Cherry

Walnut







Fabric Options

Fabric Options



SV007-29



SZ131-42



SZ131-02



XY-312



XY-313



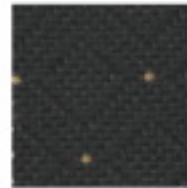
XY-314



XY-324



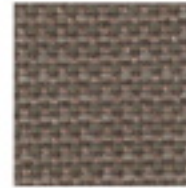
SZ131-43



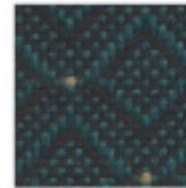
SZ131-38



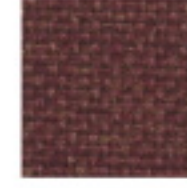
SV007-121



SV007-108



SZ131-07



SV007-73



XY-315



XY-316



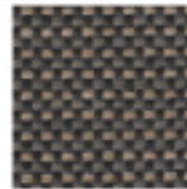
XY-317



XY-327



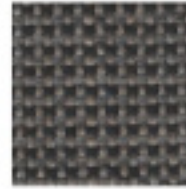
SV007-101



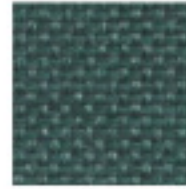
SV007-120



SV007-91



SV007-109



SV007-40



SV007-110



XY-318



XY-319



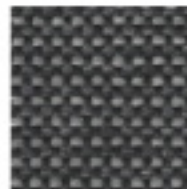
XY-320



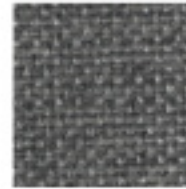
XY-330



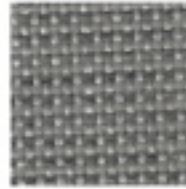
SZ131-37



SV007-79



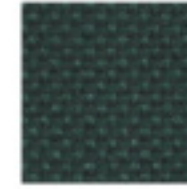
SV007-47



SV007-48



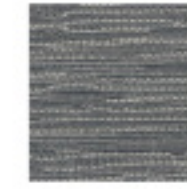
SV007-41



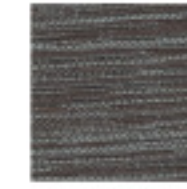
SV007-57



XY-321



XY-322



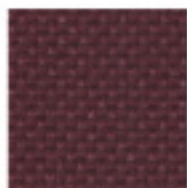
XY-323



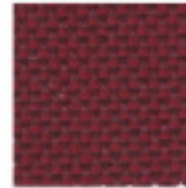
XY-333



SV007-49



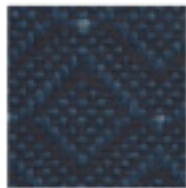
SV007-43



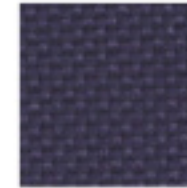
SV007-37



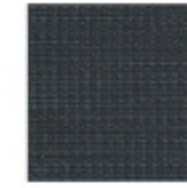
SV007-51



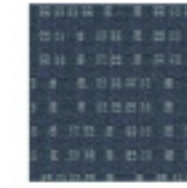
SZ131-09



SV007-55



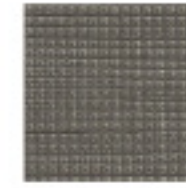
XY-325



XY-326



XY-331



XY-332



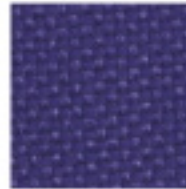
SV007-39



SV007-93



SV007-66



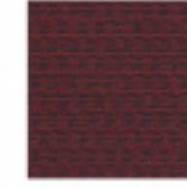
SV007-53



SV007-36



SV007-64



XY-328



XY-329



XY-334



XY-335